

DOI No.: <http://doi.org/10.53550/EEC.2022.v28i04s.036>

# Method for Separation and Detection of Gold Sulphide from Banded Magnetite Quartzite (BMQ) of Goa

Sujata Dabolkar\* and Nandkumar Kamat

Mycological Laboratory, Department of Botany, Goa University, Taleigao 403 206, Goa, India,

(Received 15 December, 2021; Accepted 18 January, 2022)

## ABSTRACT

Gold (I) sulphide is the inorganic compound with the formula  $Au_2S$ . It is the principal sulphide of gold. It decomposes to gold metal and elemental sulphur, illustrating the nobility of gold. Recovering gold from sulphide refractory gold ore has been an important guarantee for the sustainable development of gold industry, while there are many challenges in the treatment of sulphide refractory gold ore, such as environmental pollution and low gold recovery. In this study we aimed at separating gold sulphide from Banded Magnetite Quartzite (BMQ) of Goa. The BMQ sample was dried, powdered, concentrated by panning method and subjected to magnetic separation using neodymium magnet and sieved into different fractions with the sieve size of 250, 150, 106, 53  $\mu m$ . Powdered sample was tested for presence of gold sulphide by ICP-AES, SEM-EDX, CHNOS Analysis methods.

**Key words:** Gold sulphides, Banded Magnetite Quartzite (BMQ), Goa, Biooxidation, Separation and detection.

## Introduction

Goa is situated in the northwestern part of the Western Dharwar Craton (WDC) which is Asia's major metallogenic province (Dessai, 2011). The iron ores of Goa are associated with greenstone and occurs as bands, reefs and lenses of BHQ and BMQ (Dessai, 2018). Various research findings show the presence of gold in the WDC and parts of the Konkan region. Occurrence of gold (0.06 to 0.16) ppm in laterite and powdery ore of the Keri and Kalne villages of Maharashtra and < 0.1 ppm gold in laterite and iron ores in the Sindhudurg district (Umthay, 1993). Occurrence of gold in sulphidic BIFs ranging from 0.7 to 3.2 g/t (Sawkar *et al.*, 1995). Lot of work has been done on biomineralization of gold and on biofilms on bacterioform gold (Reith *et al.*, 2007, 2009; Fairbrother *et al.*, 2013). Gold(I) sulfide is the

inorganic compound with the formula  $Au_2S$  and principal sulphide of gold. It decomposes to gold metal and elemental sulphur, illustrating the nobility of gold. Recovering gold from sulphide refractory gold ore has been an important guarantee for the sustainable development of gold industry, while there are many challenges in the treatment of sulphide refractory gold ore, such as environmental pollution and low gold recovery.

In this study, A novel method for gold sulphide recovery from BMQ was proposed with the purpose of improving recovery efficiency of gold.

## Methodology

### Sample preparation

Collected samples were dried, powdered using mor-

tal and pestle (Panda *et al.*, 2011). The recovered sample was concentrated by panning method (Southam *et al.*, 2009) and subjected to magnetic separation using neodymium magnet (Oliveira and Larizzatti, 2006) and sieved into different fractions with the sieve size of 250, 150, 106, 53  $\mu\text{m}$ .

### ICP-AES studies

Inductively coupled plasma atomic emission spectroscopy (ICP-AES) is an analytical technique used for the detection of chemical elements. The coarse ferromagnetic material was removed first serial washing was then carried out with tap water to remove the lighter and soluble fraction and heavier insoluble fraction (I) was resubjected to magnetic separation to remove fine ferromagnetic particles which had escaped previous treatment. The heavier fraction (II) was then dried and tested for detection of Sulfur by Lassaigne's and lead acetate test. The intensity of this emission is indicative of the concentration of the element within the sample. Quantification of gold by ICP-AES method was carried out at the Cera Laboratories in Mumbai. 10 gram of completely dried sample at 105°C (Panda *et al.*, 2011) with 106 micron size sieved fraction of each sample was sent for the analysis as per the demand of the instrument and company.

### Scanning electron microscopy (SEM) study

Gold sulphide particles were analyzed using SEM-EDX characterization by Carl-Zeiss Scanning Electron Microscope (SEM) (USIC, Goa University). The

gold sulphide particles were mounted on a carbon tape and the images were obtained with operational conditions 15 to 35kV (Falconer *et al.*, 2009).

### CHNS/O Elemental Analysis

Sulphur analysis was carried out using CHNS/O Elemental Analyzer Perkin Elmer PE 2400 series II which works on frontal chromatography technique for separation and estimation of C, H, N, S and O elements in a sample. It was carried out at Sophisticated Instrumentation Centre for Applied Research and Testing (SICART) at Vallabh Vidyanagar, Gujarat, India

### Results and Discussion

We were successful in obtaining the powdered, dried sieved fractions of the samples. The fractions 150, 106, 53  $\mu\text{m}$  showed high concentration of gold and same fraction were thus used for the further studies. Similar finding has been reported in Brazilian mines (Oliveira and Larizzatti, 2006), Australian mines (Reith, 2013). The iron ore from the BIF of Goa has not been subjected to multi-elemental analysis (such as Au, Ag, Pt including REE). However, our studies have established that BMQ contains 8 ppm. Values of gold (0.98–4.72 ppm) has been reported from Gadag greenstone belt, Western Dharwar Craton, Peninsular India (Ugarkar *et al.*, 2016). Determination of gold (0.5 to 50 ppm) in low grade ores and concentrates by anion exchange separation followed by neutron activation has been

**Table 1.** Gold sulphides found elsewhere and their distribution and concentration in auriferous ores

Types	Occurrence	Country	Reference
Primary gold–sulphide deposits arsenical gold sulphide	carboniferous strata of the Arctic zone	Russia Greece	Aleksandrova <i>et al.</i> , 2020 Komnitsas, C., and Pooley, F.D. 1990.
refractory gold sulfide Primary gold sulphide deposit	Migori granite-greenstone complex- Archean rocks	Argentina Migori gold belt, Kenya.	Marchevsky <i>et al.</i> , 2017 Ogola <i>et al.</i> , 2002
Au, pyrite, and arsenopyrite	Birimian greenstone belt of Boromo–Goren (lower Proterozoic)	West Africa	Bamba <i>et al.</i> , 2002
Au, pyrite, and arsenopyrite	Granite greenstone belts	Barberton Greenstone Belt (BGB) of the Kapaavaal Craton, South Africa	Pretorius <i>et al.</i> , 1988
Primary gold deposit	Barberton Greenstone Belt (BGB)	South Africa	Altigani 2021

reported (Iyer and Krishnamoorthy, 1976). Chemical oxidation is performed at elevated temperatures with either dry (roasters) or wet (autoclaves) ore. For bio-oxidation the ore is mixed with water and microorganisms in highly aerated continuous stirred tank reactors (CSTR's).

As shown in Figure 1(a-b), typological classification of gold sulphide. Figure 1a and 1b show the irregular particles with the irregular BFG with rough surface. These grains ranged from 0.1 to 1mm in diameter coarse, sub-angular to angular with no mechanical damage. The presence of the elemental gold and sulphur is seen in the spectra presented in Figure 2.

The sodium fusion test or Lassaigne's test used to

carry out elemental analysis for the qualitative determination of the presence of foreign elements, sulphur in an organic compound. The appearance of violet colour indicates the presence of sulphur. Lead acetate test was also positive which was indicated by the formation of a brownish-black precipitate which is formed due to sulfide ions which react with lead (II) acetate. Sulphur analysis was carried out using CHNS/O Elemental Analyzer which showed the presence of 0.6% of sulphur corresponding to approximately 9% (w/w) gold sulphide in heavy fraction of BMQ.

### Conclusion

We were successful in detection and separation of

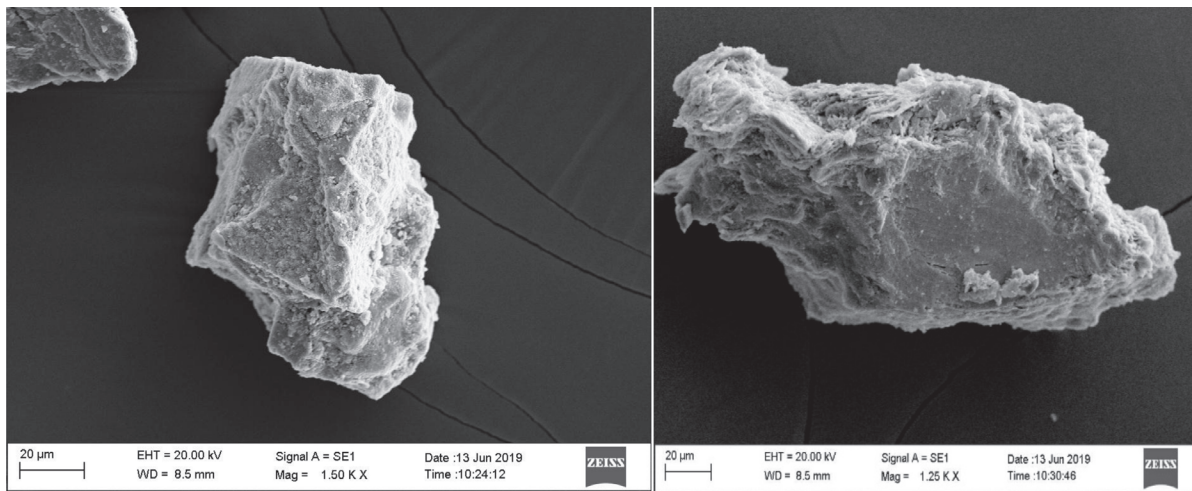


Fig. 1(a-b). SEM based typological classification of gold sulphide grains; a,b-Irregular with rough surface.

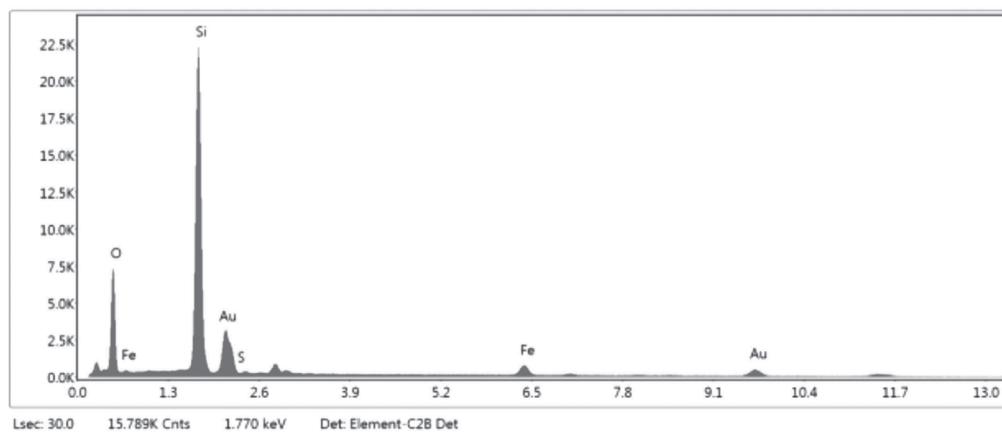


Fig. 2. SEM-EDX characterization of gold sulphide grains. The presence of the elemental gold can be seen in the spectra presented by the EDX analysis.

gold sulphide from the BMQ sample for the first time in Goa. The presence of gold sulphide in the sample provide opportunity to carry out the biooxidation using the bacterial cultures. Thus can be useful in biomining of gold.

### Acknowledgements

First author acknowledges UGC, NF-OBC Junior Research fellowship. We also thank School of Earth Ocean and Atmospheric Sciences for identification of ore samples and technical guidance. we would like to thank Sophisticated instrumentation Centre for Applied Research and Testing (SICART) at Vallabh Vidyanagar, Gujarat, India and Cera Lab Mumbai for their help in sulfur and Gold analysis.

### References

- Aleksandrova, T. N., Talovina, I. V. and Duryagina, A. M. 2020. Gold-sulphide deposits of the Russian Arctic zone: Mineralogical features and prospects of ore beneficiation. *Geochemistry*. 80(3): 1255-10.
- Altigani, M. A. H. 2021. Insights on Mineralogy and Chemistry of Fairview Gold Mine, Barberton Greenstone Belt, South Africa. *Indonesian Journal on Geoscience*. 8(1): 73-99
- Bamba, O., Parisot, J. C., Grandin, G. and Beauvais, A. 2002. Ferricrete genesis and supergene gold behaviour in Burkina Faso, West Africa. *Geochemistry: Exploration, Environment, Analysis*. 2(1): 3-13.
- de Oliveira, S. M. B. and Larizzatti, J. H. 2006. Some Observations on gold in the weathering profile at Garimpo Porquinho, an artisanal mine in the Tapajós region, Brazilian Amazon. *Geologia USP. Série Científica*. 5(2): 1-11.
- Dessai, A. G. 2011. The geology of Goa Group: revisited. *Journal of the Geological Society of India*. 78(3): 233-242.
- Fairbrother, L., Etschmann, B., Brugger, J., Shapter, J., Southam, G. and Reith, F. 2013. Biomineralization of gold in biofilms of *Cupriavidus metallidurans*. *Environmental Science & Technology*. 47(6): 2628-2635.
- Falconer, D.M. and Craw, D. 2009. Supergene gold mobility: a textural and geochemical study from gold placers in southern New Zealand. *Economic Geology Special Publication*. 14 : 77-93.
- Iyer, R. and Krishnamoorthy, K. 1976. Determination of gold in low grade ores and concentrates by anion exchange separation followed by neutron activation. *Journal of Radioanalytical and Nuclear Chemistry*. 33(2): 243-249.
- Komnitsas, C. and Pooley, F. D. 1990. Bacterial oxidation of an arsenical gold sulphide concentrate from Olympias, Greece. *Minerals Engineering*. 3(3-4) : 295-306.
- Marchevsky, N., Quiroga, M. B., Giaveno, A. and Donati, E. 2017. Microbial oxidation of refractory gold sulfide concentrate by a native consortium. *Transactions of Nonferrous Metals Society of China*. 27(5) : 1143-1149.
- Marchevsky, N., Quiroga, M. B., Giaveno, A. and Donati, E. 2017. Microbial oxidation of refractory gold sulfide concentrate by a native consortium. *Transactions of Nonferrous Metals Society of China*. 27(5) : 1143-1149.
- Ogola, J. S., Mitullah, W. V. and Omulo, M. A. 2002. Impact of gold mining on the environment and human health: a case study in the Migori gold belt, Kenya. *Environmental Geochemistry and Health*. 24(2) : 141-157.
- Panda, L., Das, B., Rao, D. S. and Mishra, B. K. 2011. Selective flocculation of banded hematite quartzite (BHQ) ores. *The Open Mineral Processing Journal*. 4: 45-51.
- Pretorius, A.J., van Reenen, D.D. and Barton, Jr, J. M. 1988. BIF-hosted gold mineralization at the Fumani Mine, Sutherland greenstone belt, South Africa. *South African Journal of Geology*. 91(4): 429-438.
- Reith, F., Etschmann, B., Grosse, C., Moors, H., Benotmane, M. A., Monsieurs, P. and Martinez-Criado, G. 2009. Mechanisms of gold biomineralization in the bacterium *Cupriavidus metallidurans*. *Proceedings of the National Academy of Sciences*. 106(42) : 17757-17762.
- Reith, F., Lengke, M. F., Falconer, D., Craw, D. and Southam, G. 2007. The geomicrobiology of gold. *The ISME Journal*. 1(7) : 567-584.
- Sawkar, R.H., Hussain, S.M. and Naqvi, S.M. 1995. Gold Mineralization in the Sulphidic BIFs of Chitradurga Schist Belt, Karnataka-Possibility of New Workable Gold Deposits. *Journal of Geological Society of India*. 46(1): 91-93.
- Southam, G., Lengke, M.F., Fairbrother, L. and Reith, F. 2009. The biogeochemistry of gold. *Elements*. 5(5): 303-307.
- Ugarkar, A. G., Malapur, M. A. and Kumar, B. C. 2016. Archean turbidite hosted orogenic gold mineralization in the Gadag greenstone belt, Western Dharwar Craton, Peninsular India. *Ore Geology Reviews*. 72: 1224-1242.
- Umthay, R.M. 1993. Occurrence of Gold in the Iron Ores of Konkan Area, Maharashtra. *Journal of Geological Society of India*. 41(3) : 277-279.